

## Cardiovascular disease (CVD)

- CVDs account for **37%** of disease related deaths globally;
- Over **6M new cases** in EU alone;
- Cost over **210B EUR** for EU economy alone;
- World Health Organisation (WHO) predicts obesity pandemic which is a **major risk factor for CVD**.

## Ligence Heart

- Deep learning solution for **cardiac ultrasound analysis**;
- Mimics the steps performed by a cardiologist;
- **Automated** morphometric measurements;
- PLA, A4CH, A2CH and even more;
- **Easy integration** to PACS;

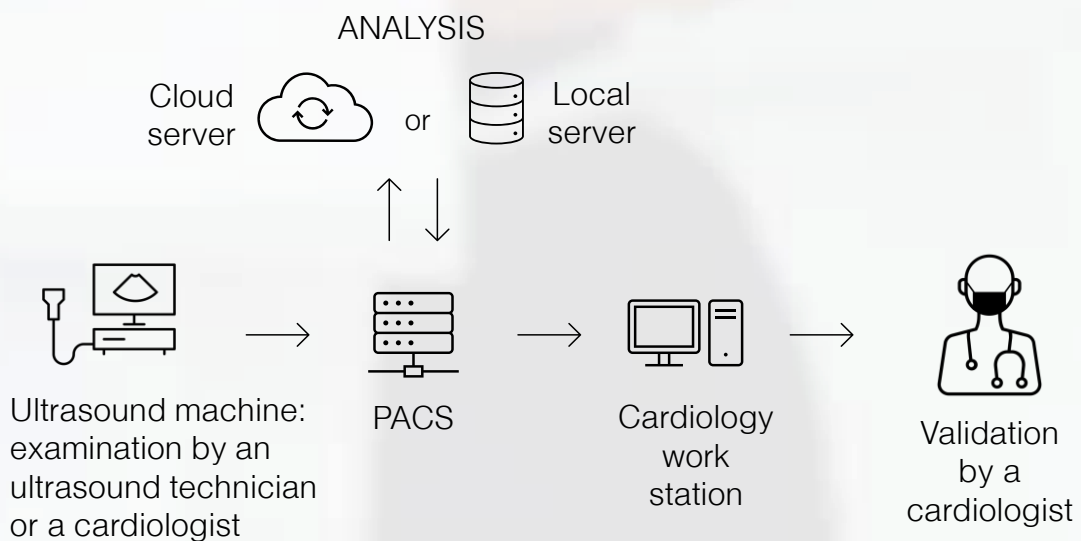
## Echocardiography

- Transthoracic echocardiography (2D TTE) is the **first choice method** for CVD diagnosis;
- Highly **subjective** (variability up to 30%);
- Up to 85% of examination is **manual and repetitive work**.

## Value proposition\*

- **Accuracy up to 94%** (non-inferior to a cardiologist);
- **Reduced intra-rater variability**;
- **Up to 4x faster study evaluation time for certain measurements\*\***;
- **Retrospective analysis** of large cohorts;
- **Standardised reporting**;

## How it works



\*Data from clinical trial

\*\*Data from clinical trial for selected measurements



Created for doctors by doctors



Interested? Contact us:  
info@ligence.io

